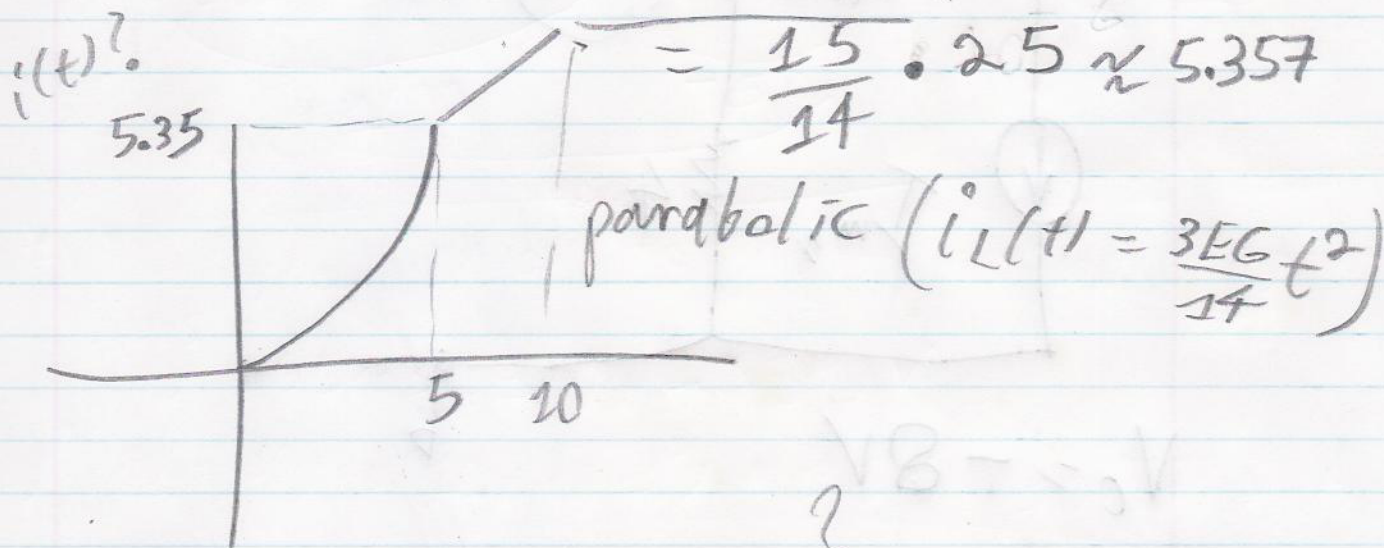
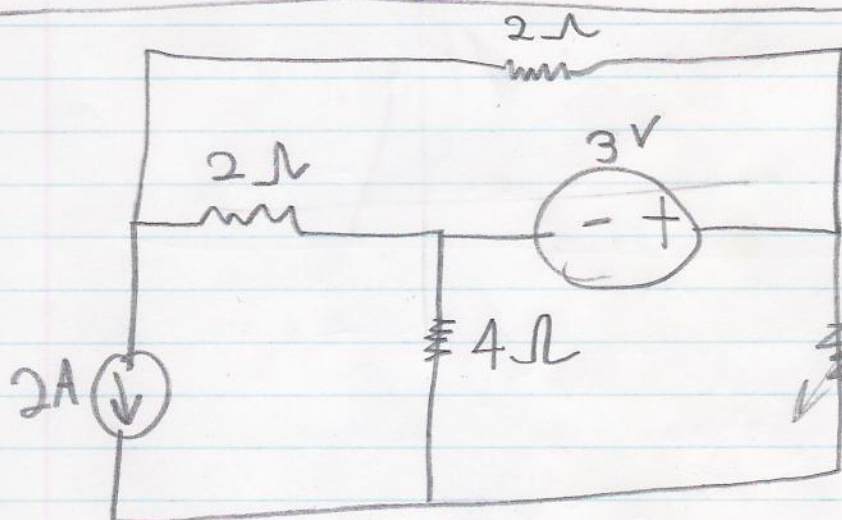


page 19

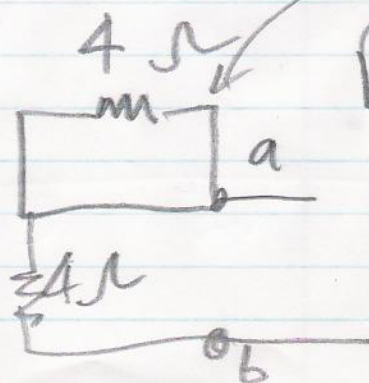
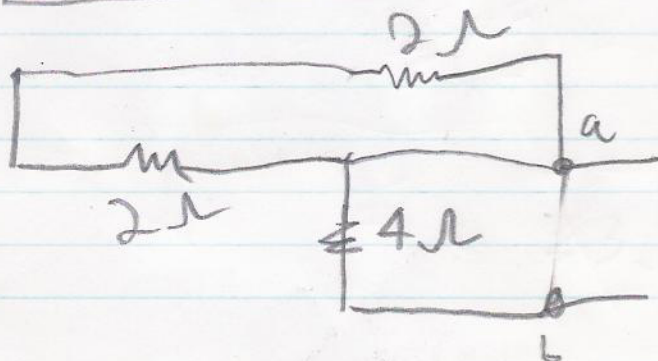
$$\Rightarrow \frac{3EGt^2}{14} \Big|_{t=5ms} = \frac{3EG}{14} \cdot (5E-3)^2$$



$$V(t) = \frac{1}{L} \int 15 dt + 5.32 = \frac{1}{7E-3} \cdot 15t + 5.32$$



load, not variable
3 ohm resistor is
meant, I think



short-circuiting
making
current
 $R_{th} = 4$
th go
through
resistor
wire
only